

FAITH
COMMUNITY
CHURCH

FCC PULSE REPORT 2025

An infographic report of our collective
heartbeat and growth as a church family

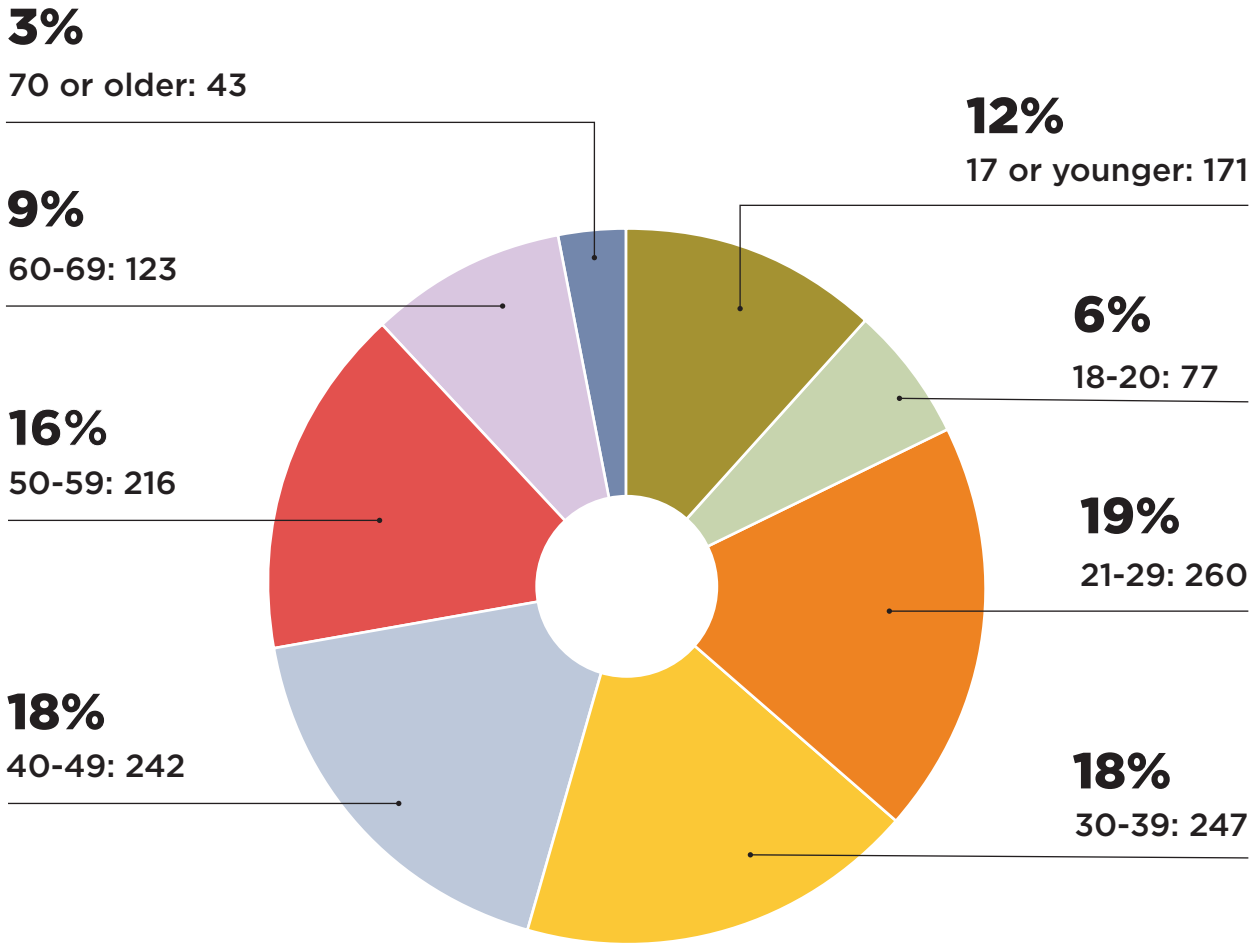
THANK YOU FOR SHARING YOUR VOICE

Thank you to everyone who participated in our 2025 Pulse Survey.
Your feedback is invaluable as we continue to grow together.

**TOTAL RESPONDENTS:
1,379 MEMBERS**

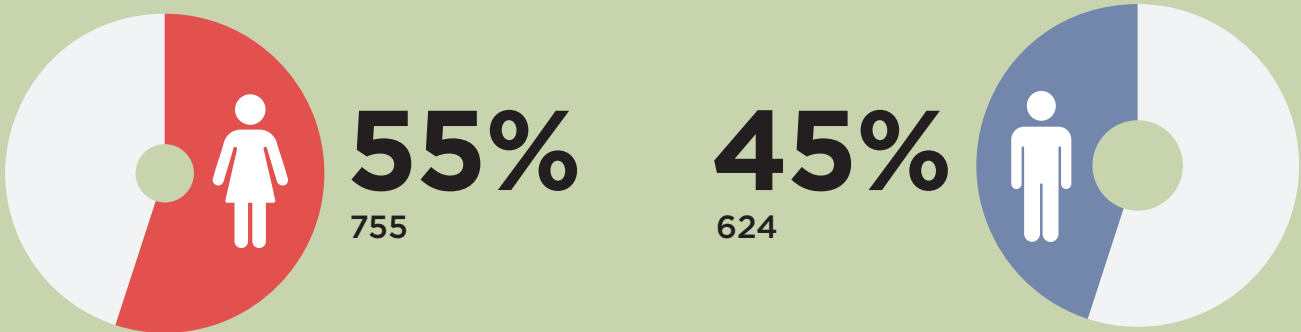
WHO WE ARE

This data gives us a wonderful picture of our diverse and growing church family.

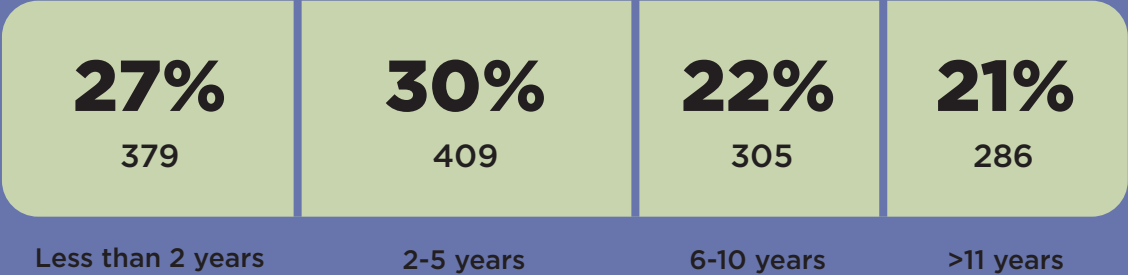


Faith Community Church (FCC) is a multi-generational, multi-ethnic church family and a spiritual home for every life stage.

GENDER



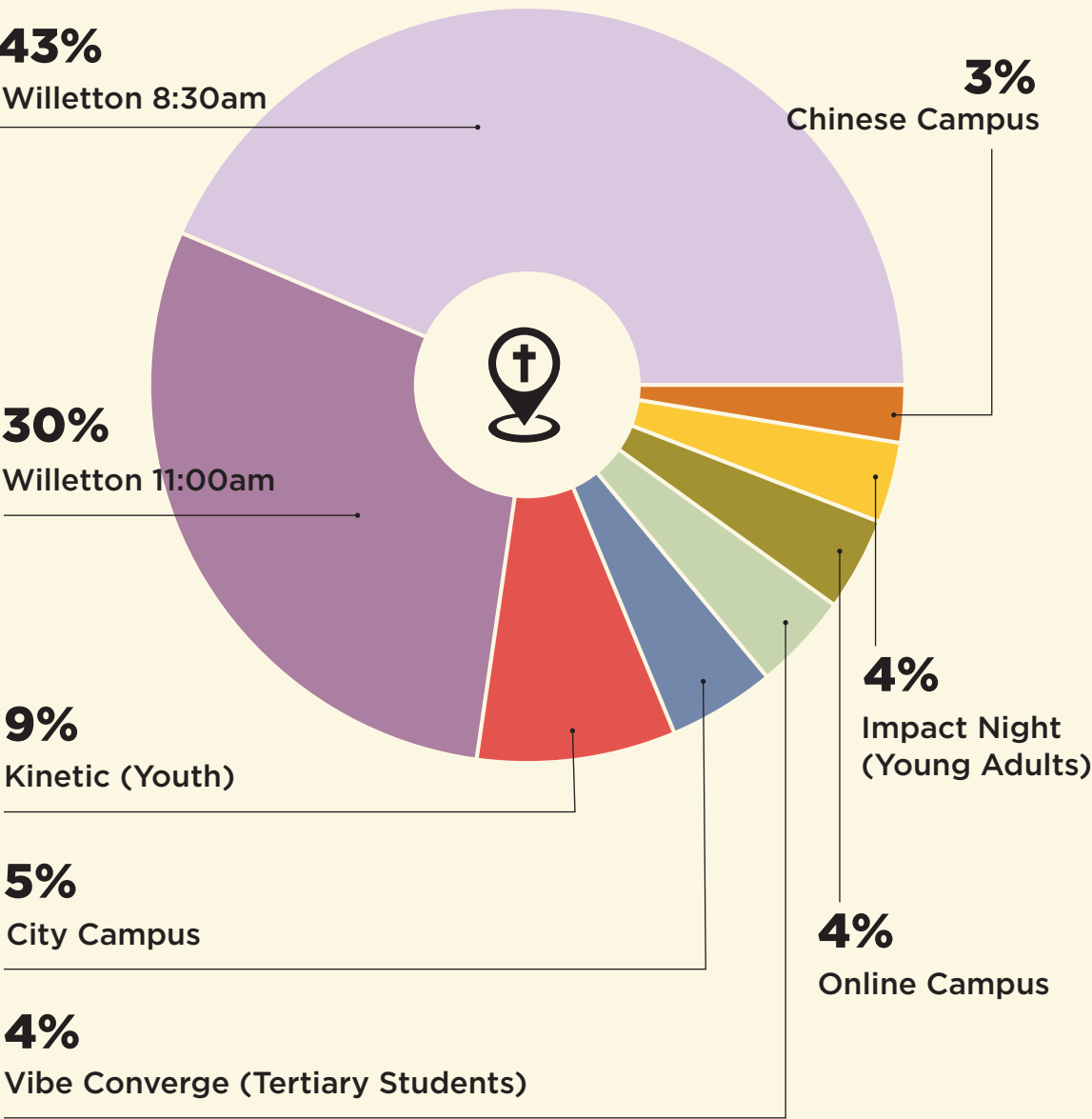
LENGTH OF ATTENDANCE



A remarkable 57% of FCC attendees joined us in the last 5 years.

SERVICES ATTENDED

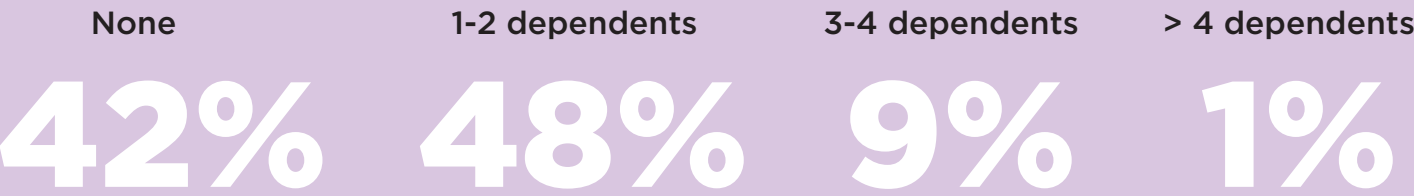
Respondents can select all they attend



MARITAL & FAMILY STATUS



Of those who are married, widowed, divorced, or separated, the number of dependents (17 or younger)



CULTURAL DIVERSITY



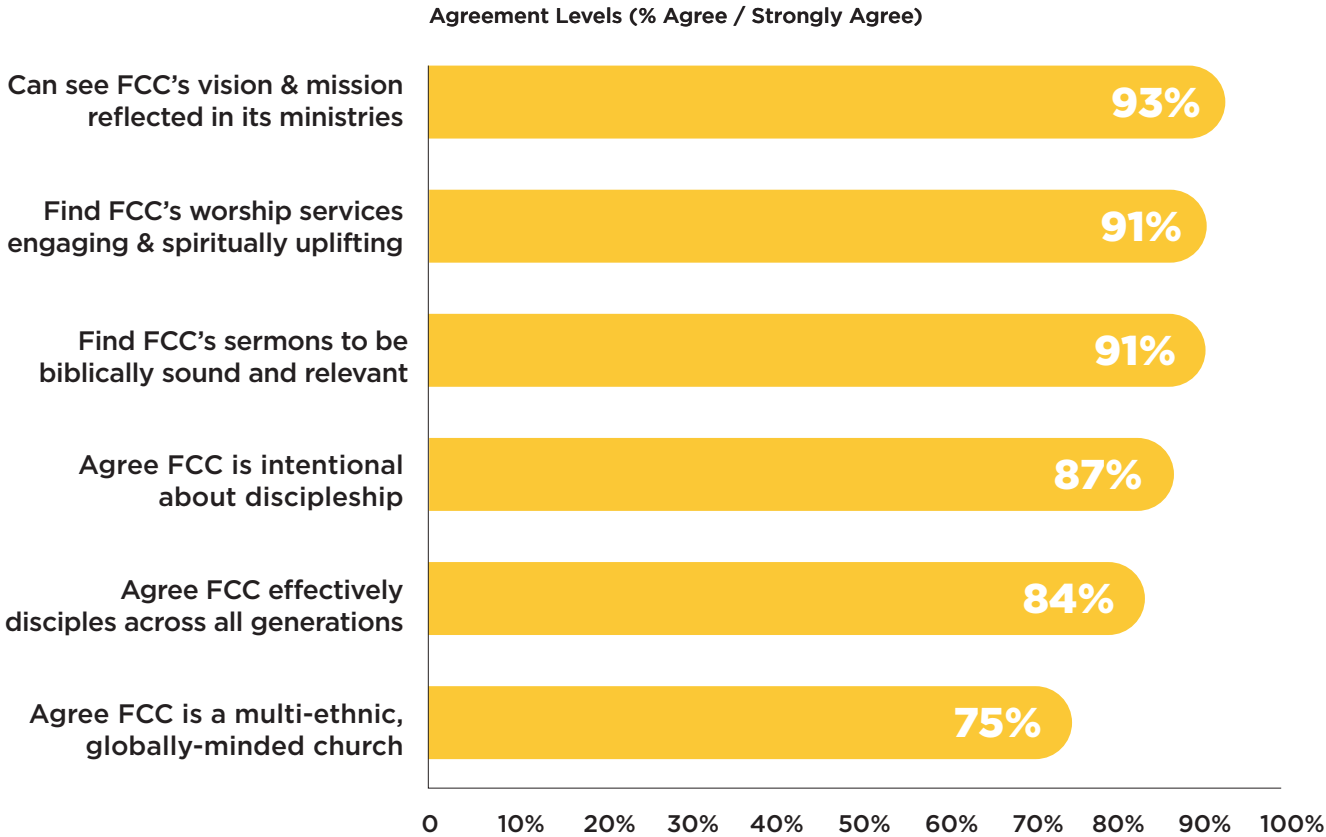
We are a truly global family, with

42 nationalities represented

- | | | | | |
|-----------------|----------------|-----------------|--------------------|-------------|
| Malaysia | United Kingdom | Kenya | Iran | Pakistan |
| Singapore | South Africa | Japan | Thailand | Netherlands |
| Australia | New Zealand | Myanmar (Burma) | Ireland (Republic) | Austria |
| China | Mauritius | Zimbabwe | Cambodia | Bhutan |
| Indonesia | Brunei | Peru | Brazil | Argentina |
| Philippines | United States | Romania | Colombia | Maldives |
| Hong Kong (SAR) | Nigeria | Zambia | Uzbekistan | |
| Korea South | Taiwan (ROC) | Germany | Ghana | |
| India | Vietnam | Sri Lanka | Venezuela | |

WHO WE'RE BECOMING VISION & CULTURE

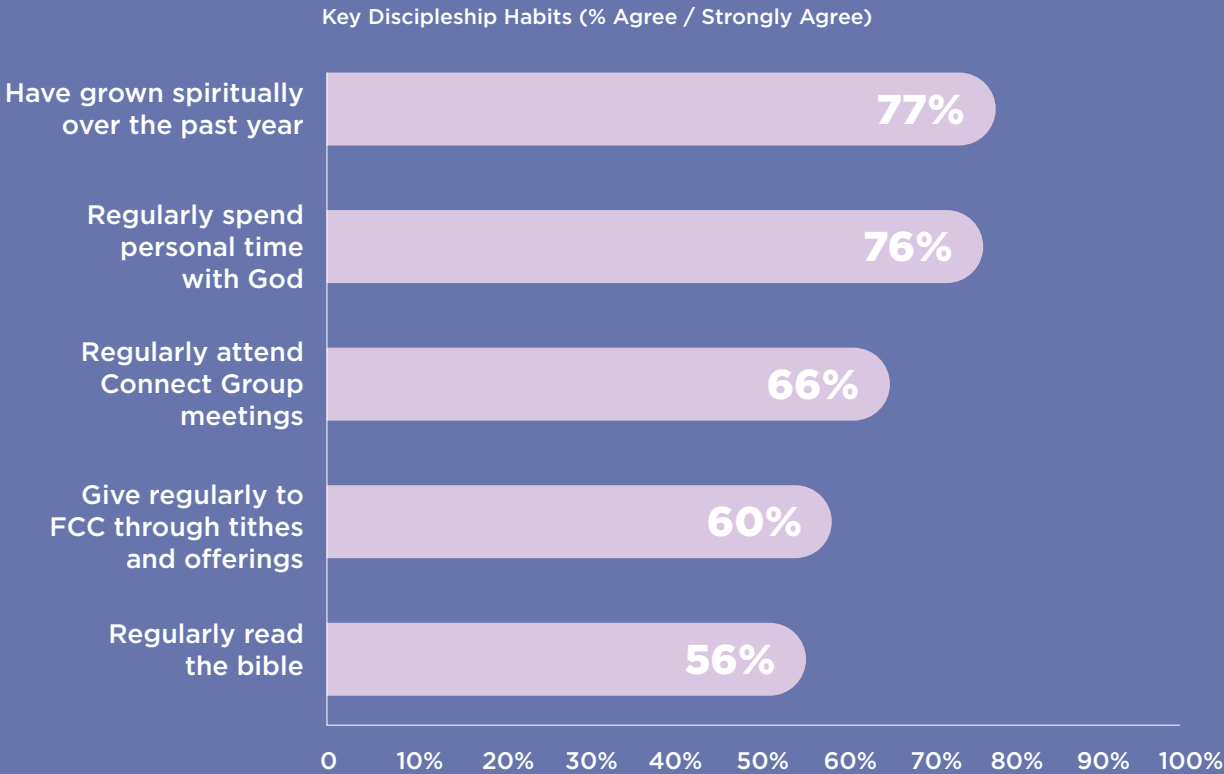
This data shows our alignment with FCC's core vision and values.



**FCC is a community that
embodies its mission as a disciple-making church.**

GROWING IN DISCIPLESHIP

We are encouraged to see a steady growth in personal and communal discipleship across all ages.



**Across every generation, FCC members have
been steadily growing spiritually and deeper in
their discipleship.**

DISCIPLESHIP PATHWAY (TYNS)

- **84%** of FCC have taken their next steps this past year.
- Members have taken an average of **3.87 out of the 12 steps** in the discipleship pathway.
- **Vibe (4.99%), Impact (5.51%), City Campus (5.18%), and Chinese Campus (4.91%)** show a higher average number of steps taken.

FAMILY LIFE & COMMUNITY

We believe faith is strengthened at home and modeled through community.



61%

have benefited from inter-generational role-modelling in FCC.



58%

of families/households regularly pray or discuss faith together.



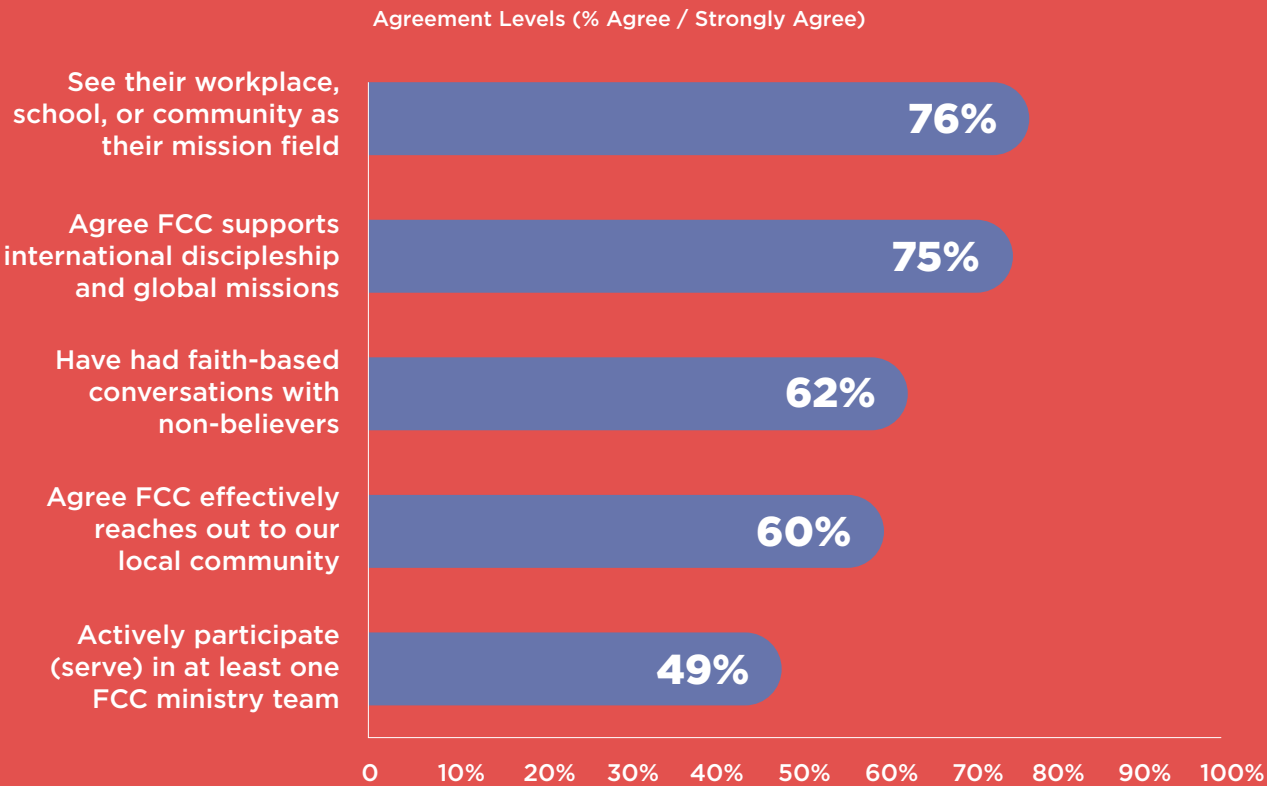
58%

feel FCC’s teaching and support helps them navigate family life and parenting.

Majority of our families are actively engaging in faith at home, and being strengthened through biblical teaching and modelling.

MISSION & OUTREACH

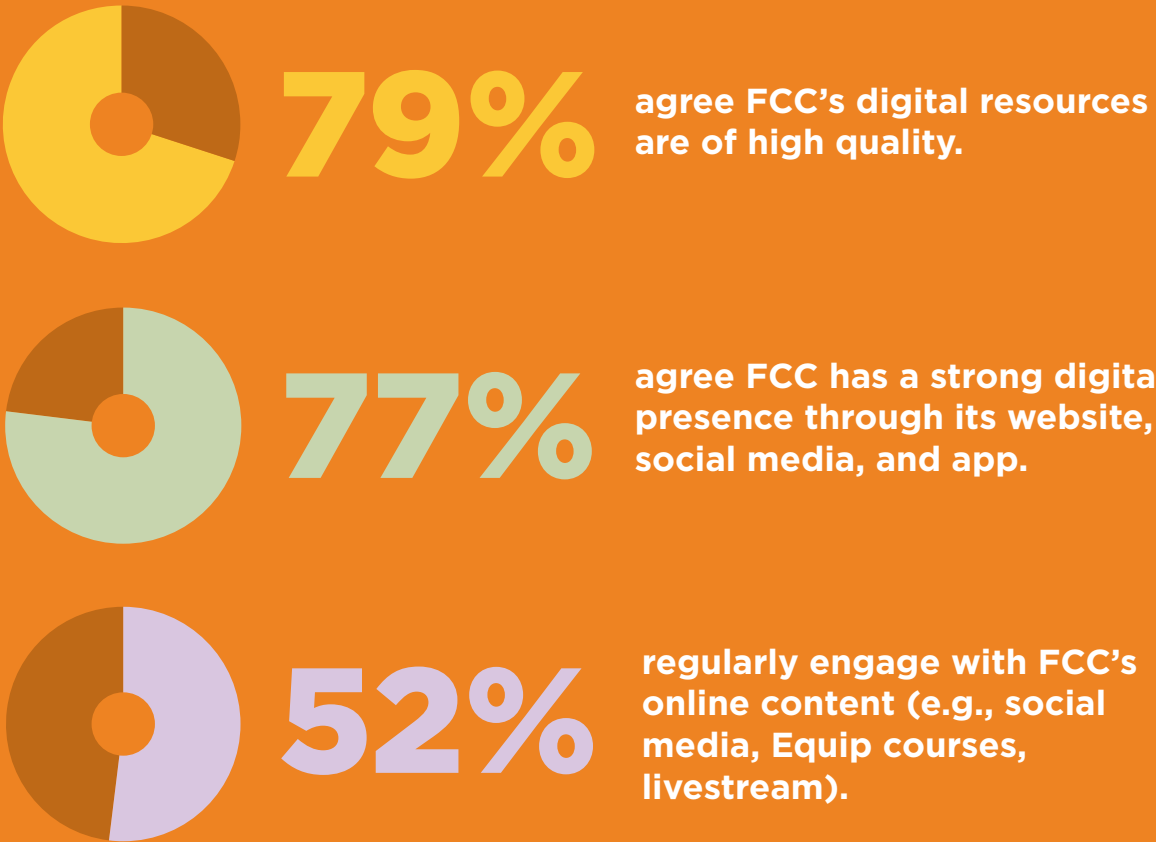
Our church is actively living out the call to be disciple-makers in our everyday lives, both locally and globally.



FCC members catch the importance of living missionally and are growing as disciple-makers at work, at home, and across nations.

DIGITAL CHURCH

Our digital ministries are a vital tool for both deepening faith and reaching new people.

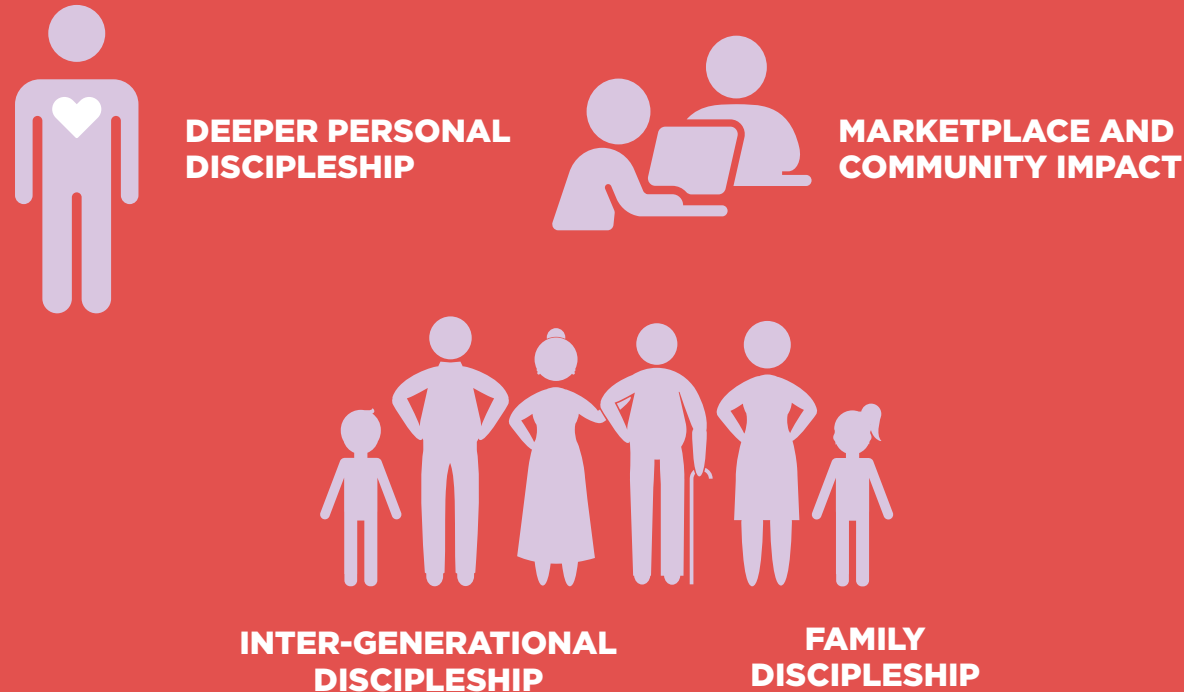


FCC's digital ministries continue to be an effective tool to deepen discipleship within the church and reach people outside the church.

LOOKING AHEAD

Based on your feedback, we will be focusing our efforts on these key areas as we move forward, all for God's glory.

AREAS WE WILL BUILD ON



"...being confident of this, that he who began a good work in you will carry it on to completion until the day of Christ Jesus."

Philippians 1:6